

[ProPTT2 Upload]

Android Application User Manual

V3.1

Jan 2025

This document describes usage instruction for ProPTT2 Android Embedded Application.



Copyright IMPTT Inc. All right reserved.

CONTENTS

- 1. Introduction..... 4
 - 1.1. About ProPTT2 4
 - 1.2. ProPTT2 Upload..... 4
 - 1.3. Who Can Use 4
- 2. Installation 5
 - 2.1. Install ProPTT2 Embedded on Android device 5
- 3. Start ProPTT2 Upload 7
 - 3.1. Account 7
 - 3.2. Basic UI 7
- 4. Login 8
 - 4.1. Server Package User **Server** 8
 - 4.2. Login Option 9
- 5. Video/Audio Record, Take a picture 10
 - 5.1. Video Resord 10
 - 5.2. Audio Record 11
 - 5.3. Take a picture 12
 - 5.4. Video Share 13
- 6. Upload a local file 14
 - 6.1. Audio/Video file..... 15
 - 6.2. Picture file 16
- 7. Upload list of Video/Audio/Picture..... 17
- 8. Setup..... 18
 - 8.1. My Info 19
 - 8.2. Basic configuration 20
 - 8.3. Bluetooth connect configuration 21
 - 8.4. PTT Button configuration 23
 - 8.5. Video share configuration 25
 - 8.6. Connection configuration 26
 - 8.7. Camera configuration 27
 - 8.8. Video configuration 28
 - 8.9. Advanced configuration..... 29
 - 8.10. Configuration 30

8.11. Information	31
9. Close Application	32
10. FAQ	33

1. Introduction

1.1. About ProPTT2

ProPTT2 is a video IP-PTT solution for video/voice PTT, real-time video sharing and also it is voice PTT compatible with two-way radio. Find out more information on ProPTT2 website.

ProPTT2 website: www.proptt2.com

1.2. ProPTT2 Upload

ProPTT2 Upload is an Android application that allows automatic uploading when online. The simple screen and UI allow for easy and convenient video/audio/photo shooting in an offline environment, and supports local file upload, upload and PTT/video sharing functions simultaneously on the same terminal.

1.3. Who Can Use

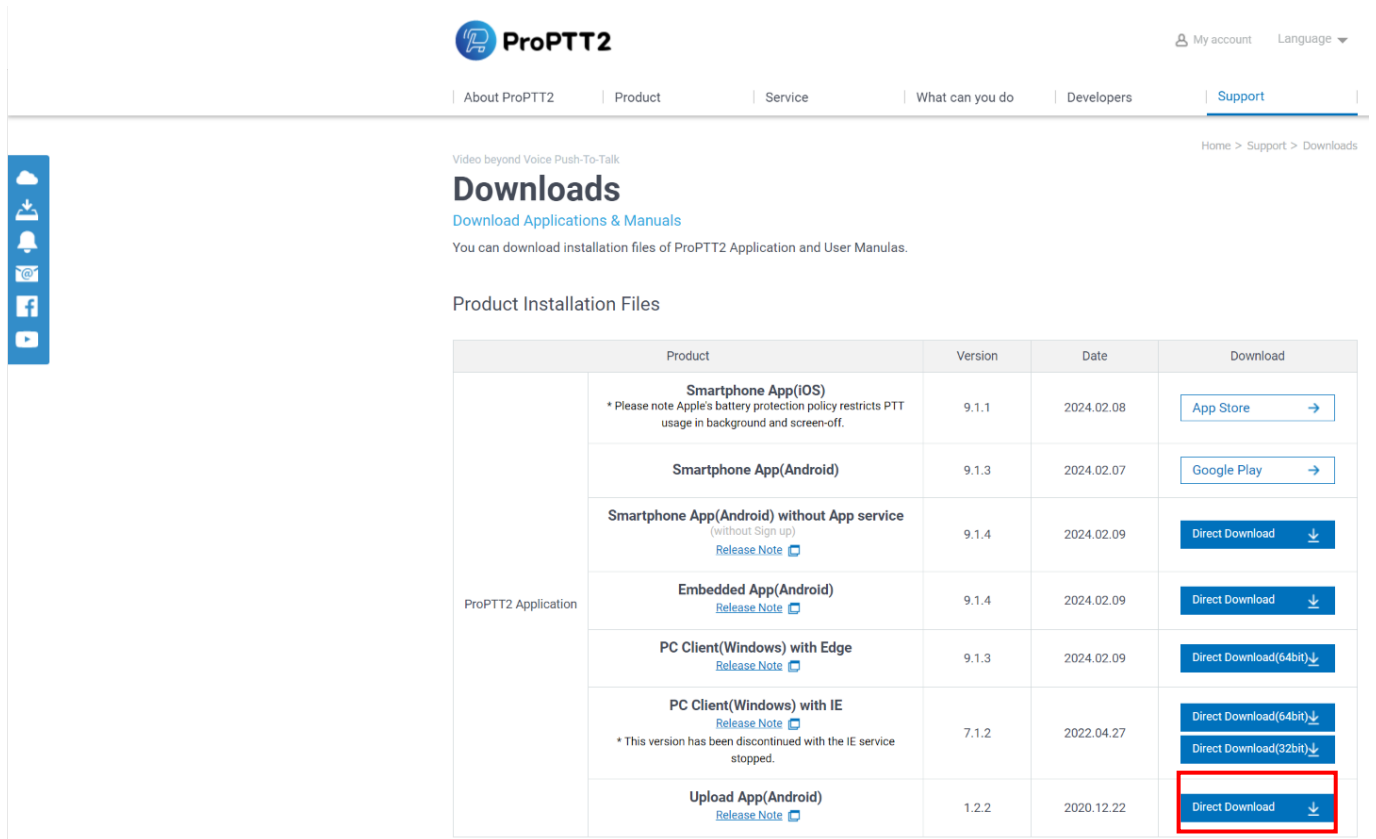
ProPTT2 Upload is for ProPTT2 Server Package (version 9.0 and above)customer's users

1. Server Package Customer's Users **Server**

Users of the customer who purchased ProPTT2 Server Package. Server Package administrator provides the users' ID and an initial password.

2. Installation

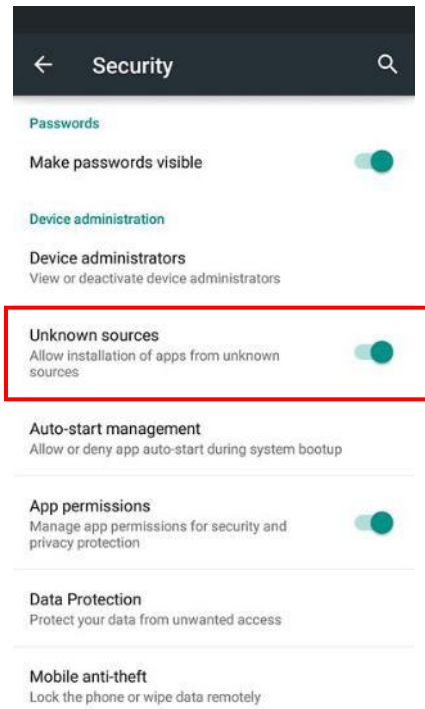
2.1. Install ProPTT2 Embedded on Android device



The screenshot shows the ProPTT2 website's Downloads page. The page header includes the ProPTT2 logo, navigation links (About ProPTT2, Product, Service, What can you do, Developers, Support), and user options (My account, Language). The main content area is titled 'Downloads' and includes a sub-header 'Download Applications & Manuals'. Below this, there is a table of Product Installation Files. The table has columns for Product, Version, Date, and Download. The 'Embedded App(Android)' row is highlighted with a red box around its 'Direct Download' button.

Product	Version	Date	Download
Smartphone App(iOS) * Please note Apple's battery protection policy restricts PTT usage in background and screen-off.	9.1.1	2024.02.08	App Store →
Smartphone App(Android)	9.1.3	2024.02.07	Google Play →
Smartphone App(Android) without App service (without Sign up) Release Note	9.1.4	2024.02.09	Direct Download ↓
ProPTT2 Application Embedded App(Android) Release Note	9.1.4	2024.02.09	Direct Download ↓
PC Client(Windows) with Edge Release Note	9.1.3	2024.02.09	Direct Download(64bit) ↓
PC Client(Windows) with IE Release Note * This version has been discontinued with the IE service stopped.	7.1.2	2022.04.27	Direct Download(64bit) ↓ Direct Download(32bit) ↓
Upload App(Android) Release Note	1.2.2	2020.12.22	Direct Download ↓

1. Go to the Download page on ProPTT2 website.
(https://www.proptt2.com/en/support_download.html)
2. Find Product Installation File > ProPTT2 Application > Embedded (Android) and click the **Direct Download** button to download an APK file.
3. Install APK file on your Android device.



* Before Install, go to Settings -> Security and check **Unknown sources**.

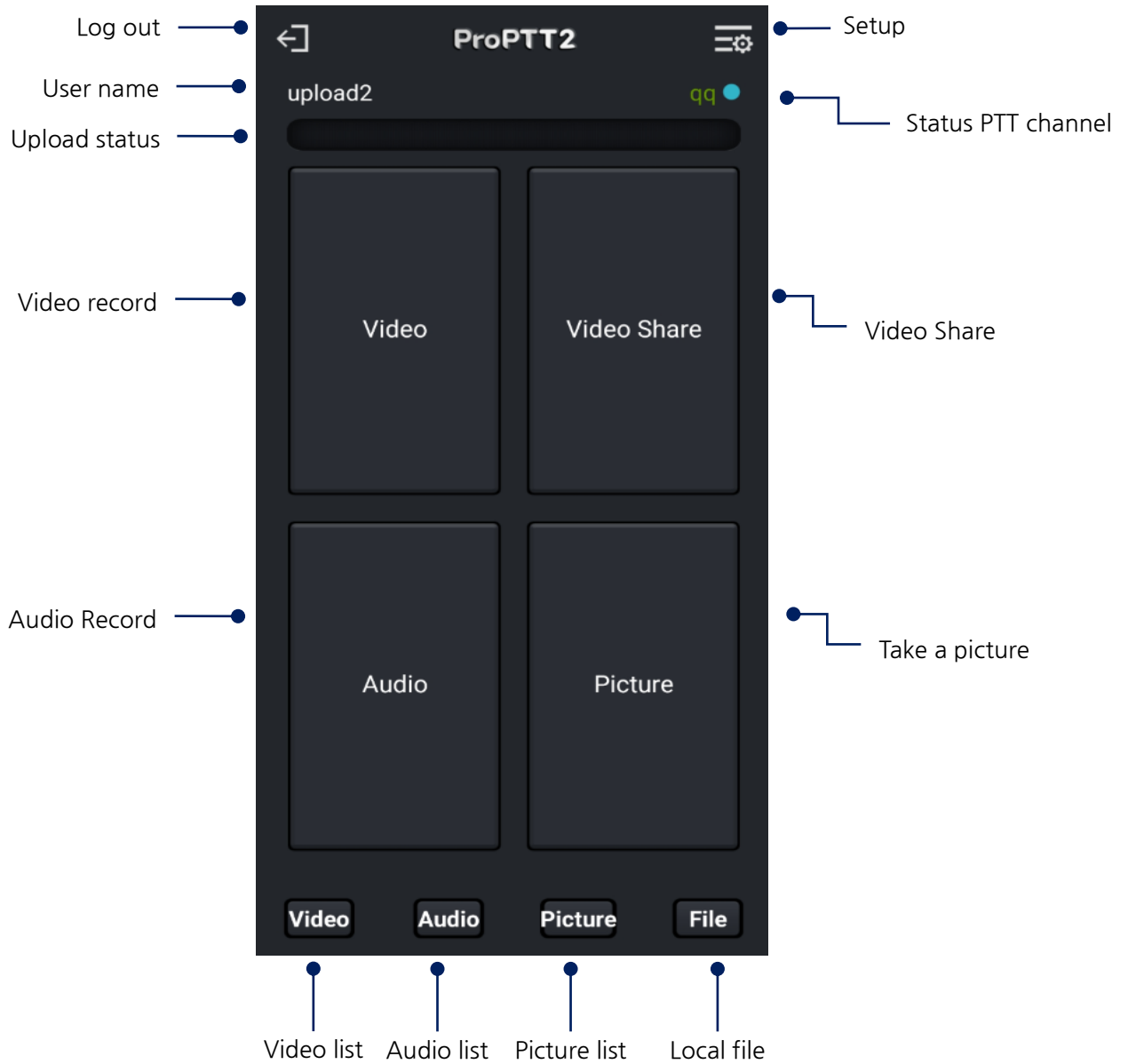
4. When the installation finished, launch the app.

3. Start ProPTT2 Upload

3.1. Account

ProPTT2 Embedded is for Cloud Service or Server Package customer’s user. If you don’t know your ID or initial password, please ask your Service administrator. About Log in, please refer to [4. Login].

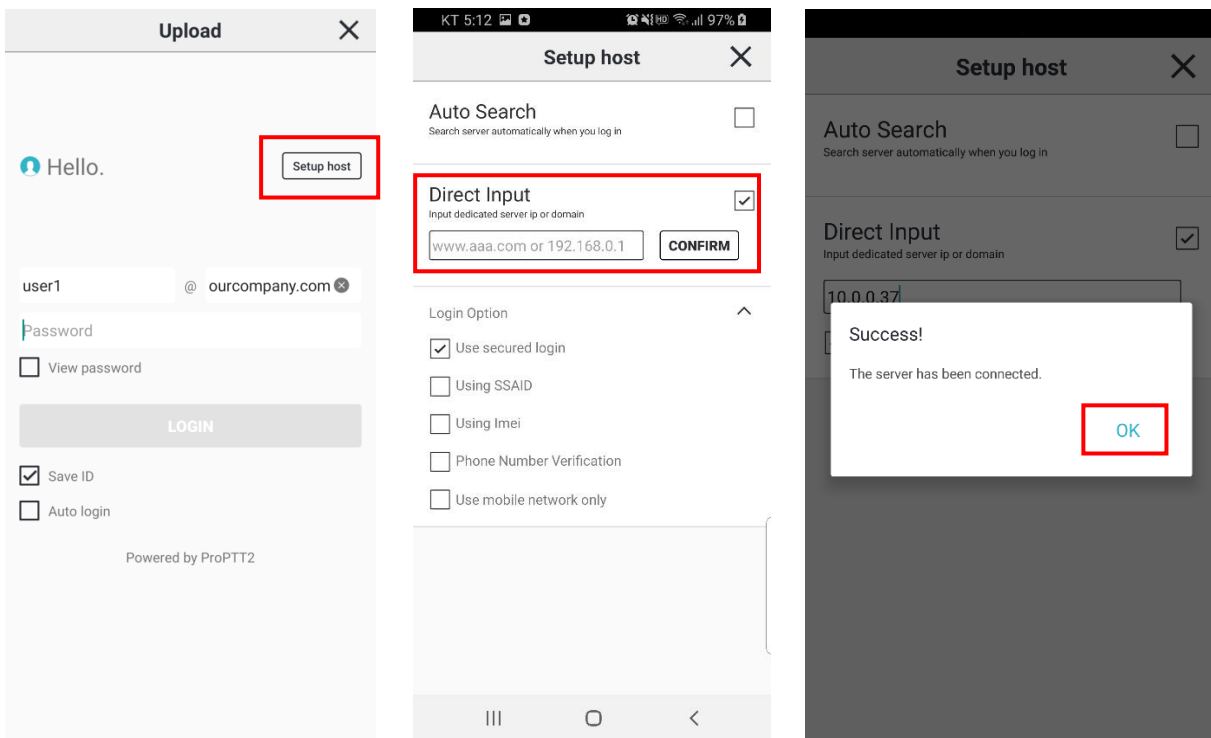
3.2. Basic UI



1. Status PTT channel: Channel name. Green(Channel joined). White(Channel leaved), Red(Server disconnected)

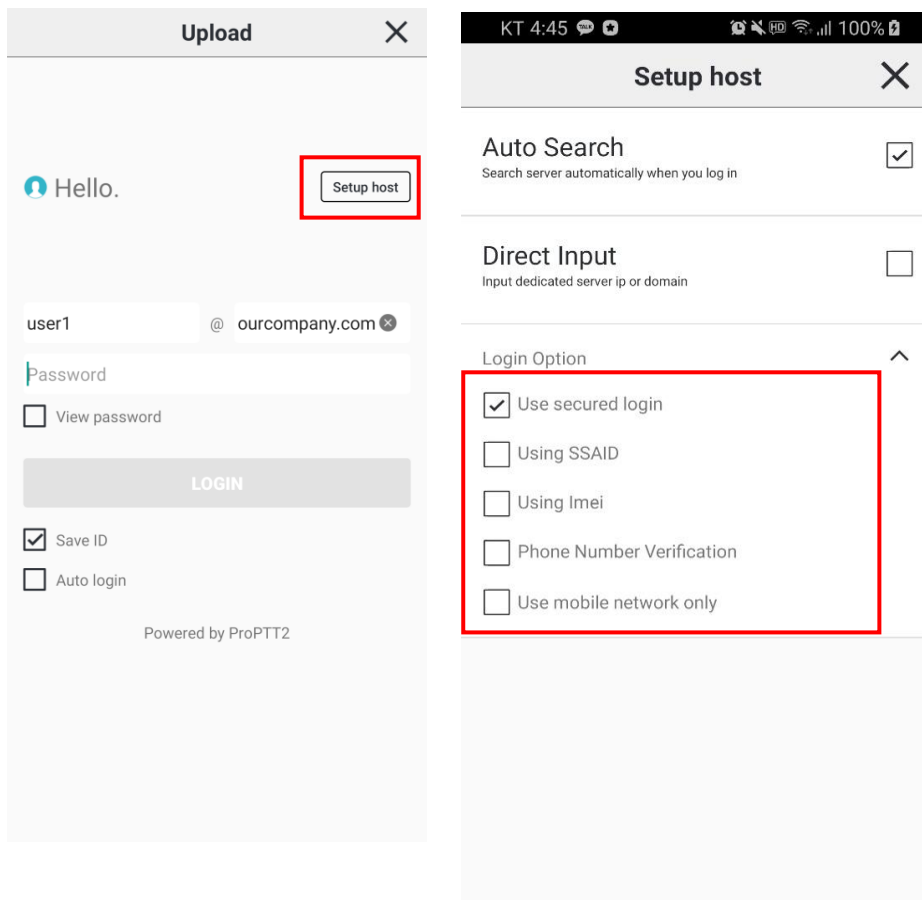
4. Login

4.1. Server Package User **Server**



2. Launch the app and tap settings icon on Login page.
3. Select **Direct Setting**.
4. Enter server IP or domain address and tap **TEST**.
(If you don't know IP or domain address, please ask your Server Package administrator.)
5. If connection succeeds, go back to login page and input ID and password and tap **Login**.
(If you don't know your ID or initial password, ask you Server service administrator.)
6. 5. Since server testing is not possible offline, you can log in offline by simply entering the ID and password you previously logged in with.

4.2. Login Option

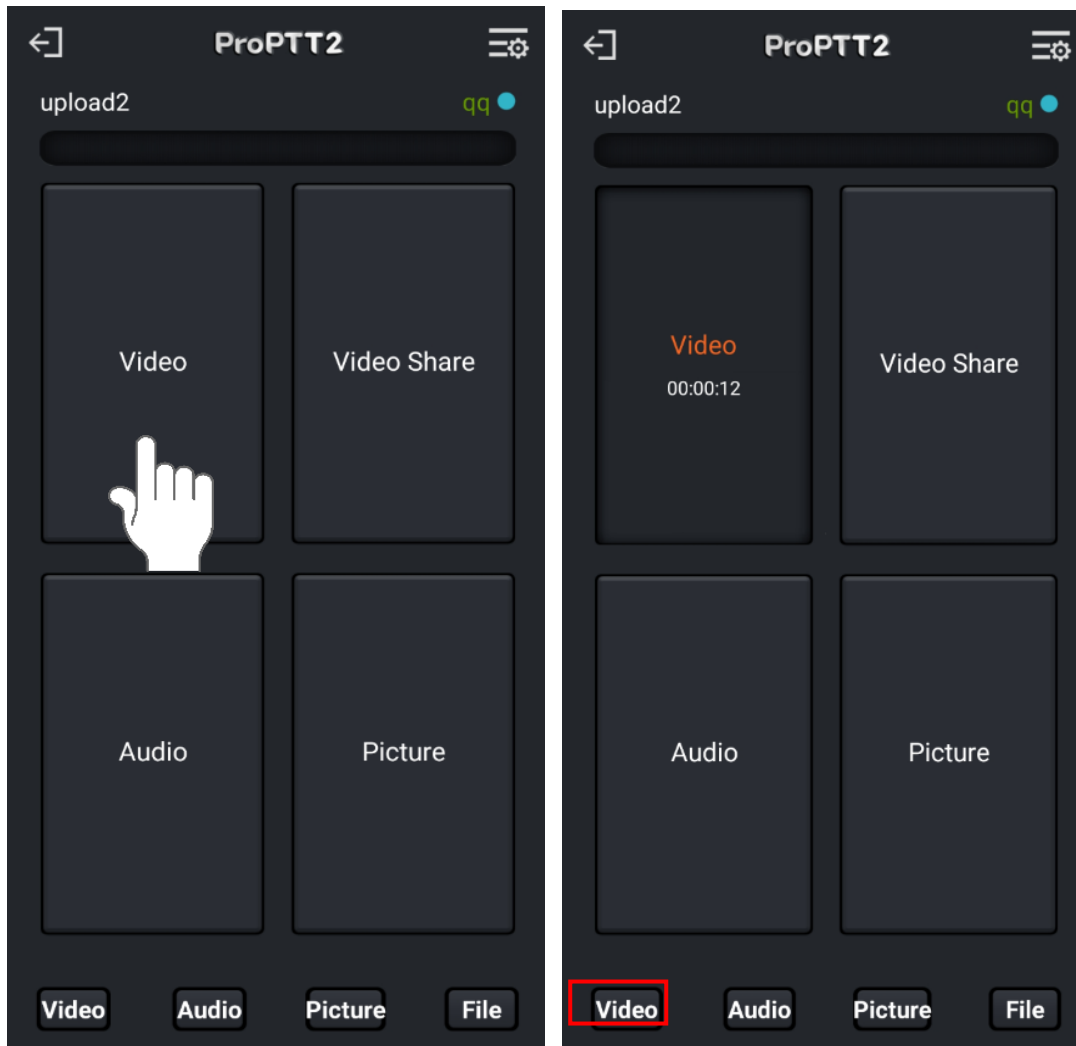


You can check login options in [Setup host] when you log in to ProPTT2 Upload.

1. Use secured login
2. Use SSAID: If you check this option, you can use the device with SSAID registered by administrator when you log in with a specific account.
3. Using IMEI: if you check this option, allows only administrator-registered device with IMEI to be used when logging into a specific account. (it is not supported from Android 10)
4. Phone Number Verification: if you check this option, allows only administrator-registered device with phone number to be used when logging into a specific account.
5. Use mobile network only: if you check this option, it works only with mobile network and not available on Wi-Fi network environment.
6. Use Device login: You can log in through SSAID/IMEI without entering an account. However, login is possible only if the permission is set on the server.

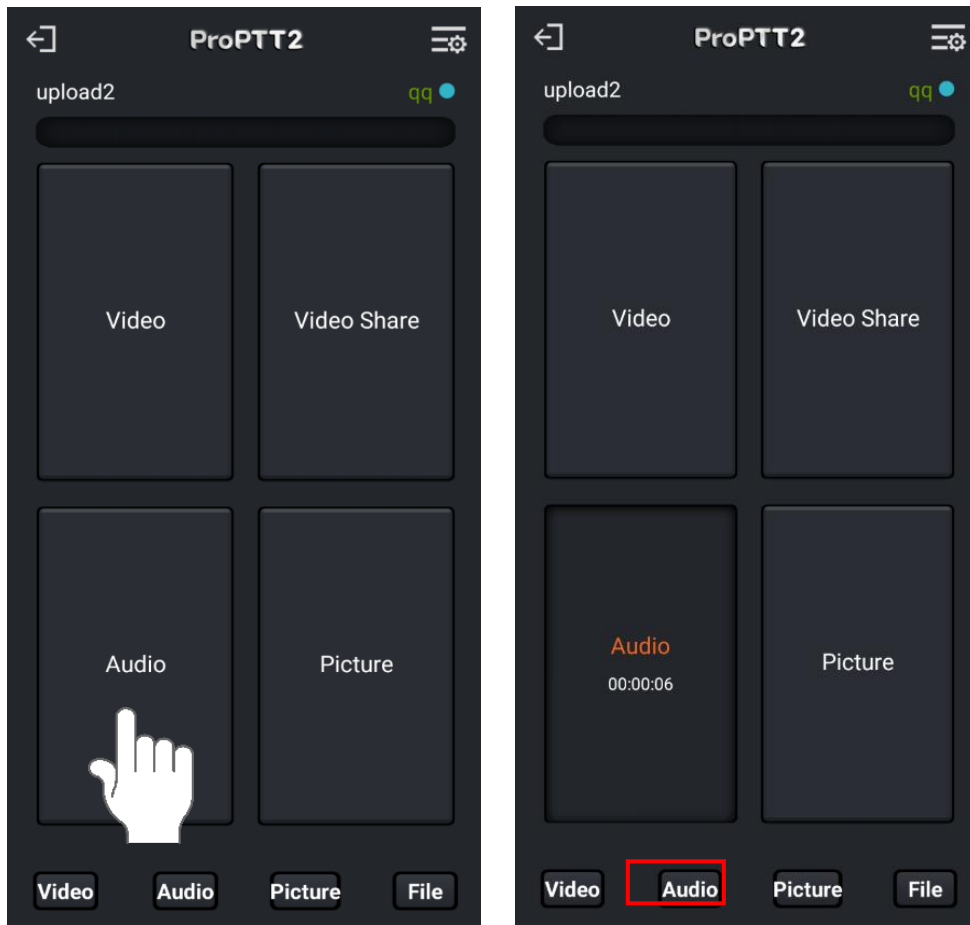
5. Video/Audio Record, Take a picture

5.1. Video Resord



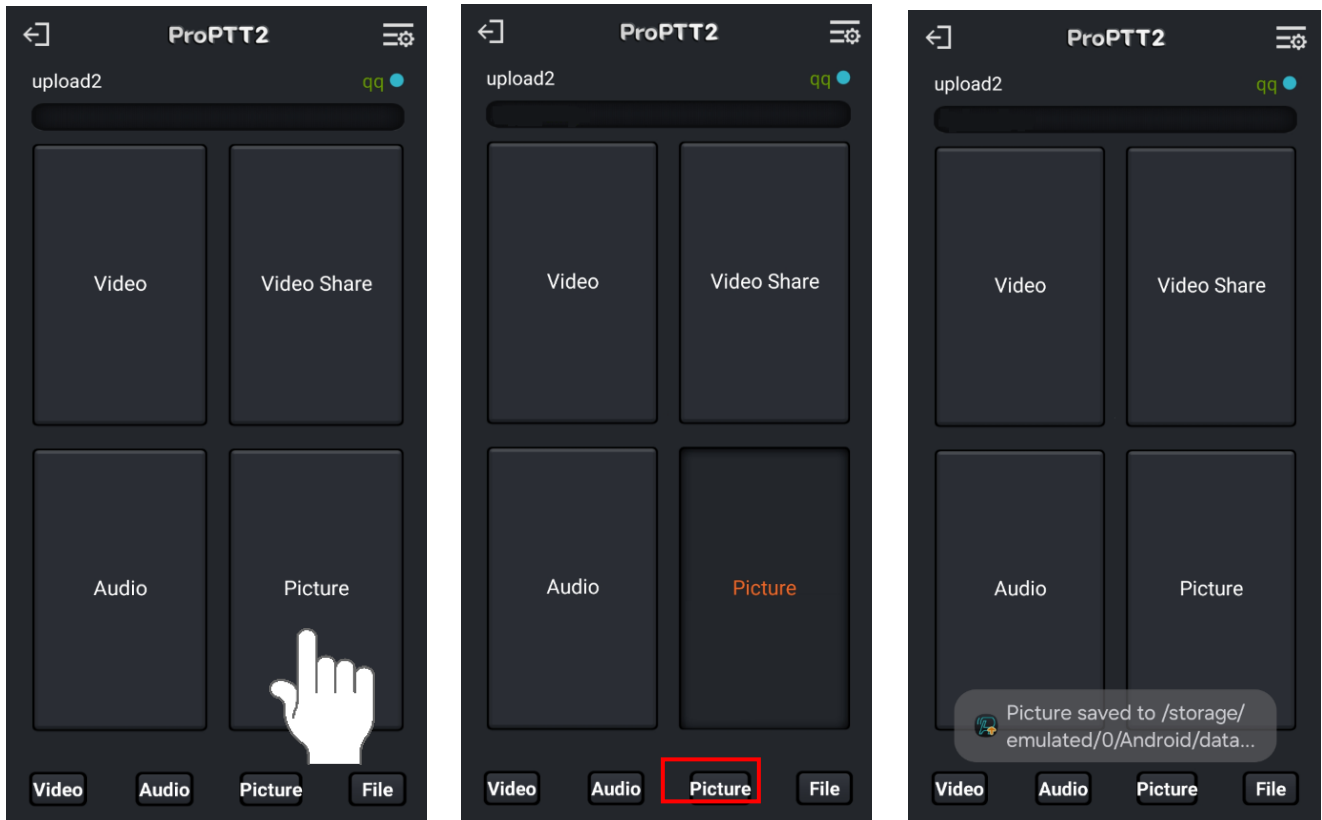
1. Touch the Video button as shown on the screen.
2. Video recording begins and you can take pictures during recording by touching the Picture button.
3. When you touch the pressed Video button, recording is completed and the button state is reset.
4. When recording is complete, touch the Video button at the bottom of the main screen to go to the video history and you can see that the recorded upload details have been added.

5.2. Audio Record



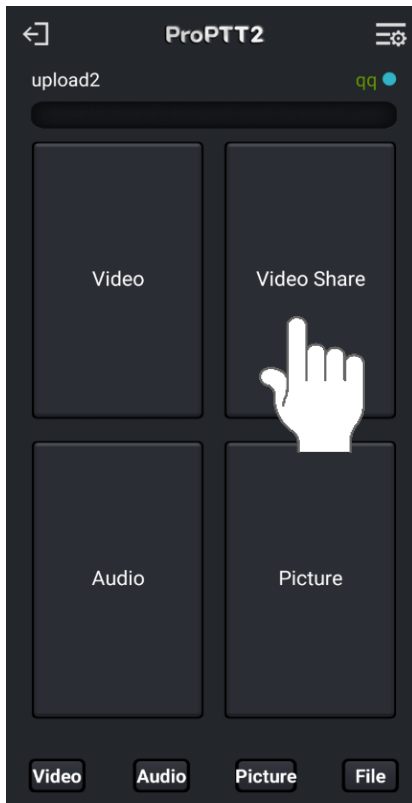
1. Touch the Audio button as shown on the screen.
2. Voice recording begins and you can take pictures during recording by touching the Picture button.
3. When you touch the pressed Audio button, recording is completed and the button state is reset.
4. When recording is complete, touch the Audio button at the bottom of the main screen to go to voice history and you can see that the recorded upload history has been added.

5.3. Take a picture



1. Touch the Picture button as shown on the screen.
2. Photo taking begins, and after a while, a message appears indicating that photo saving is complete, and the button status is reset.
3. Once the photo has been saved, touch the Picture button at the bottom of the main screen to go to the photo history and you can see that the saved upload details have been added.

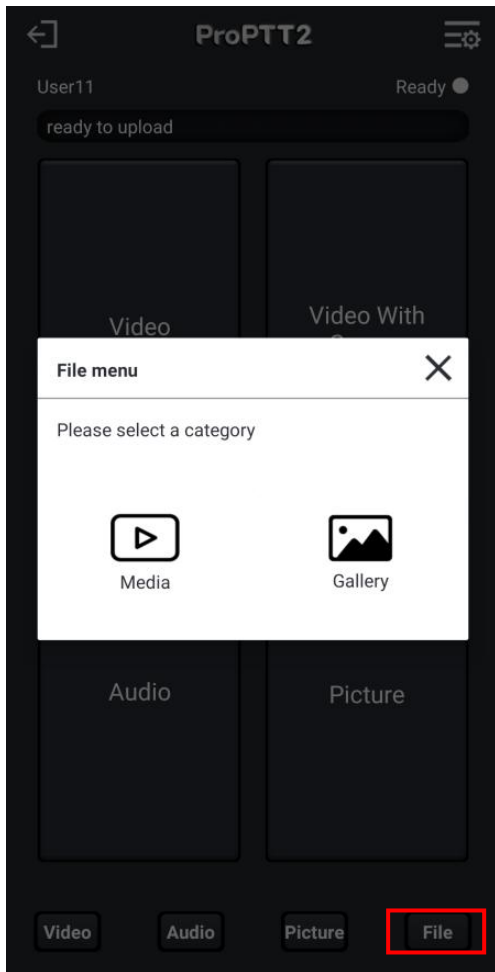
5.4. Video Share



1. Touch the video share button as shown on the screen.
2. The video will be shared on participating channels.

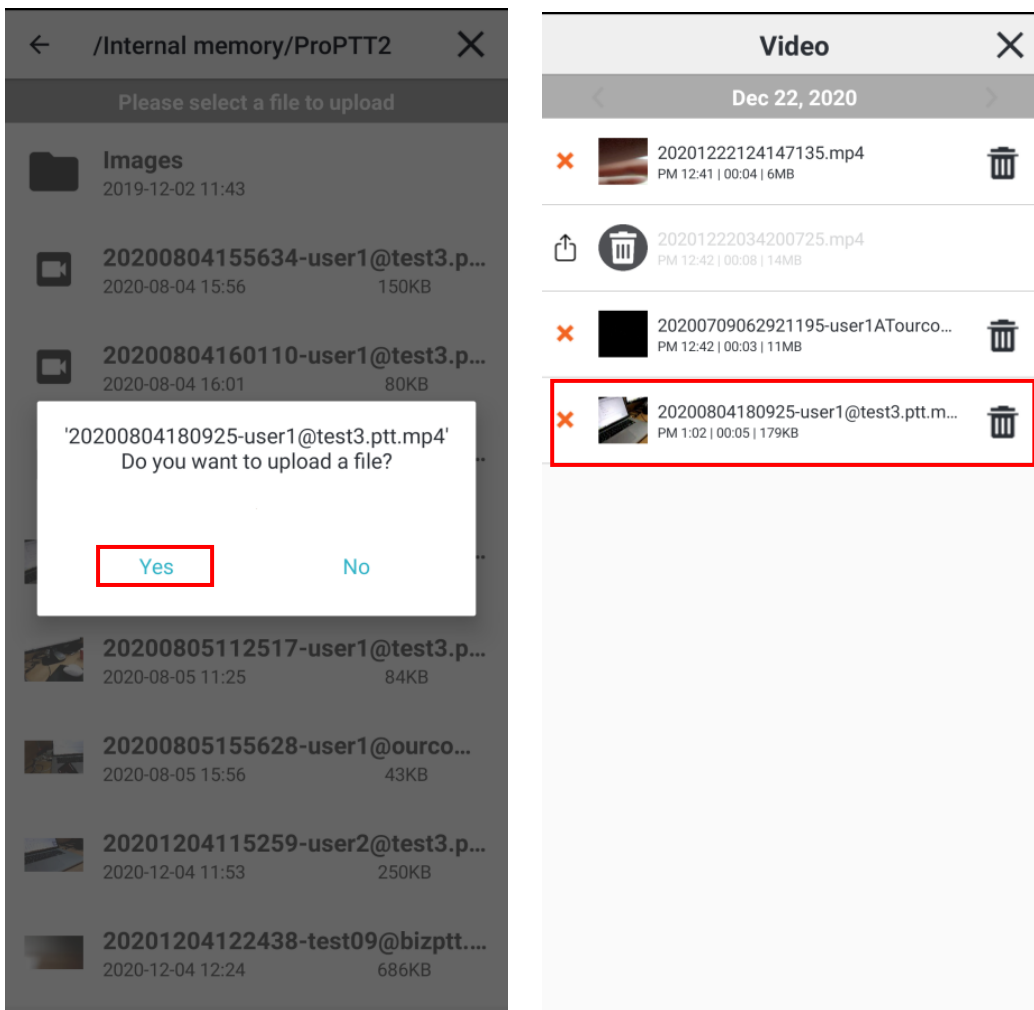
6. Upload a local file

You can browse and upload video/audio/photo local files on your device.



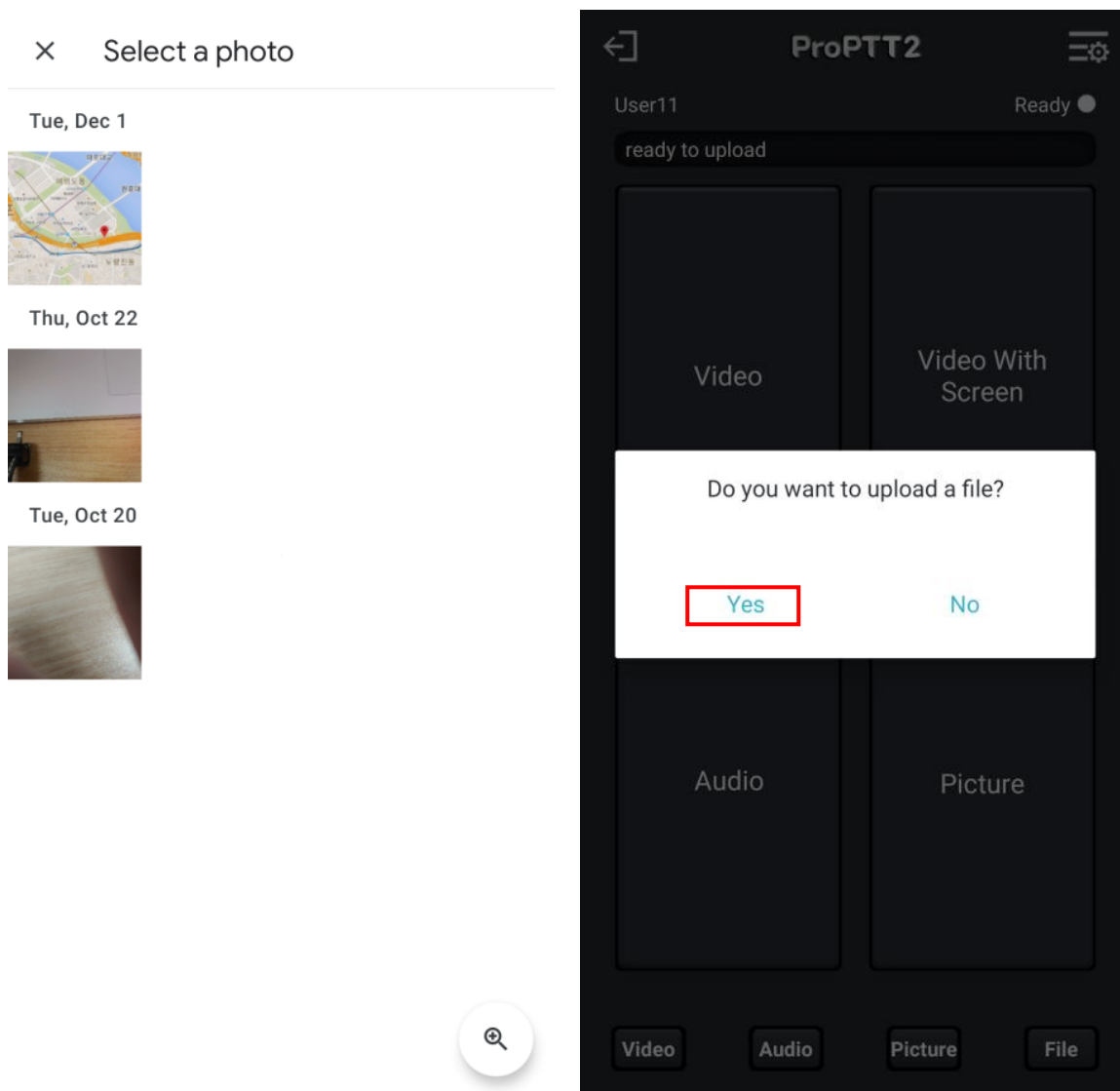
1. Select the File button at the bottom of the main screen.
2. Select the desired category among Media (video, audio) or Gallery (photo)..

6.1. Audio/Video file



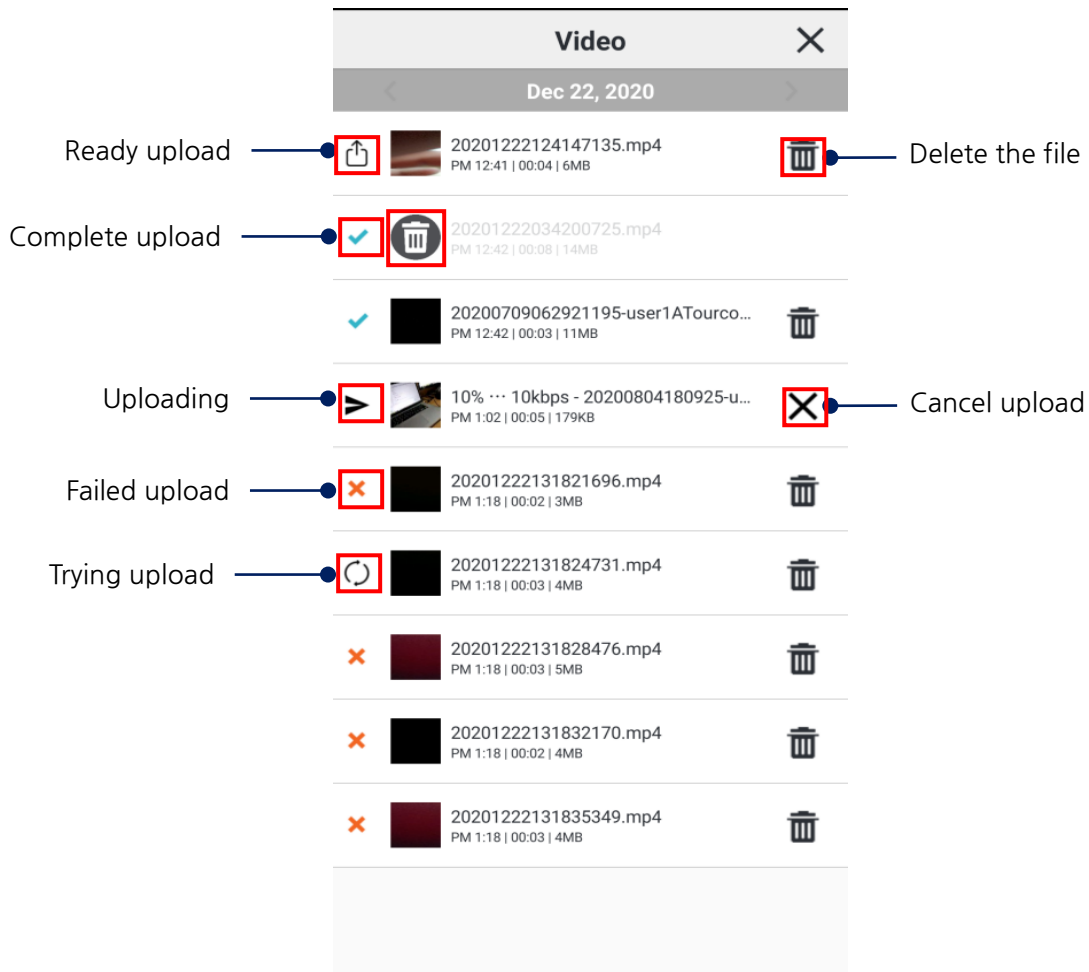
1. Go to the path of the file you want to upload and select the file.
2. Select Yes if you want to upload.
3. When you go to the video and audio history on the main screen, you can check whether local file upload details have been added..




6.2. Picture file



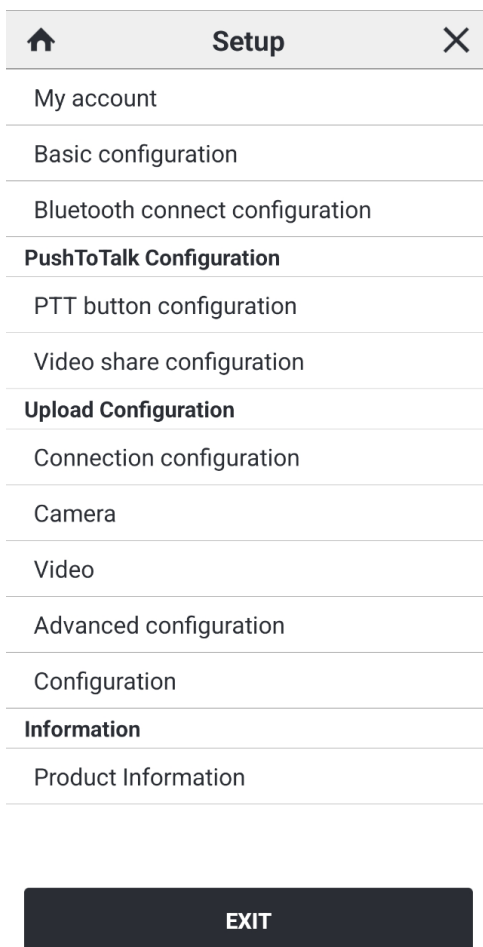
1. Go to the path of the file you want to upload and select the file.
2. Select Yes if you want to upload.
3. When you go to the photo history on the main screen, you can check whether local file upload details have been added..

7. Upload list of Video/Audio/Picture



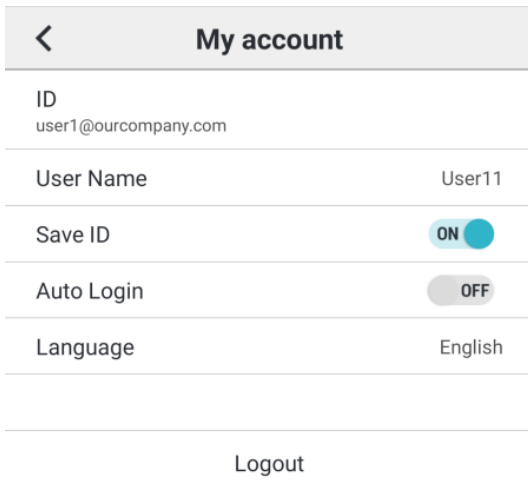
1.  : Image applied when a file is deleted
2.  : When you touch the icon, a pop-up window will appear and if you select Yes, the file will be deleted.
3.  : When you touch the icon, a pop-up window will appear and if you select Yes, the upload will be canceled.
4. Once one file upload is finished, another file upload will be attempted.

8. Setup



8.1. My Info

You can see and change account settings.

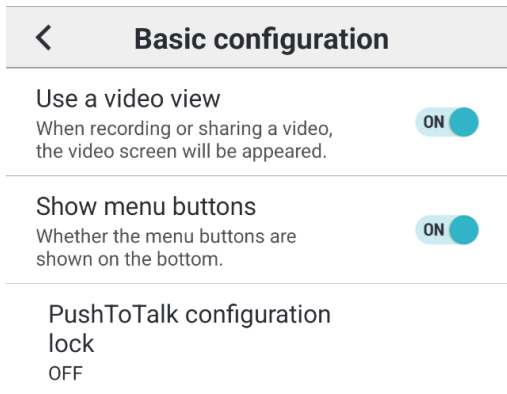


1. Setting Account

- ID: You can see your ID. You cannot change your ID.
- Change Password: Tap here and you can change your password.
- Save ID: Make the app remember your ID.
- Auto Login: Automatically log in when app is restarted.
- Language: You can change language.
- Logout

8.2. Basic configuration

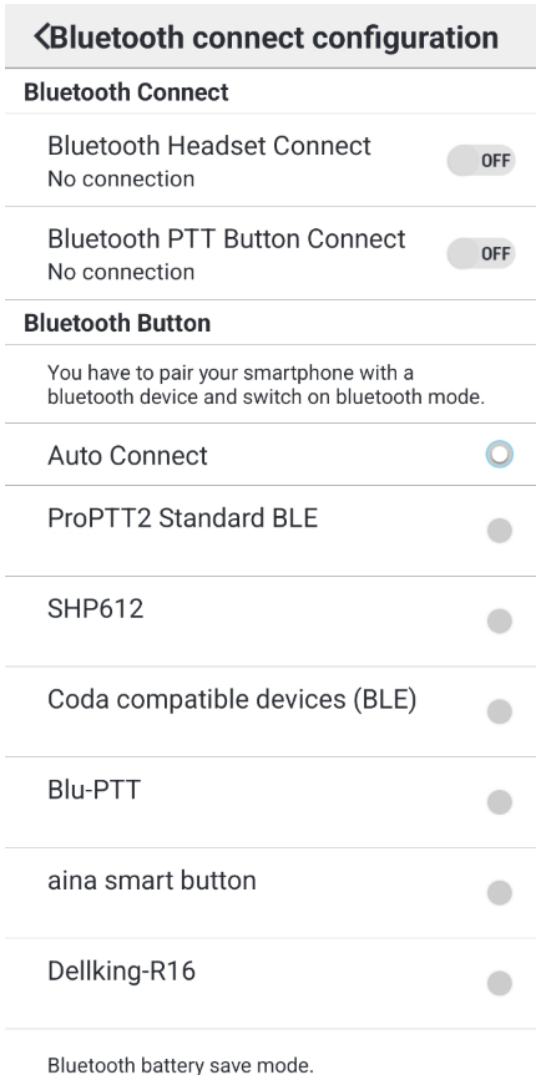
You can make basic settings.



1. Use a video view
 - You can set to use a video view for video record or video share.
2. Show menu buttons
 - You can set whether the menu buttons will be shown.
3. PushToTalk Setting Lock
 - You can set a password to keep your PushToTalk settings.

8.3. Bluetooth connect configuration

You can connect your Bluetooth device and the app.

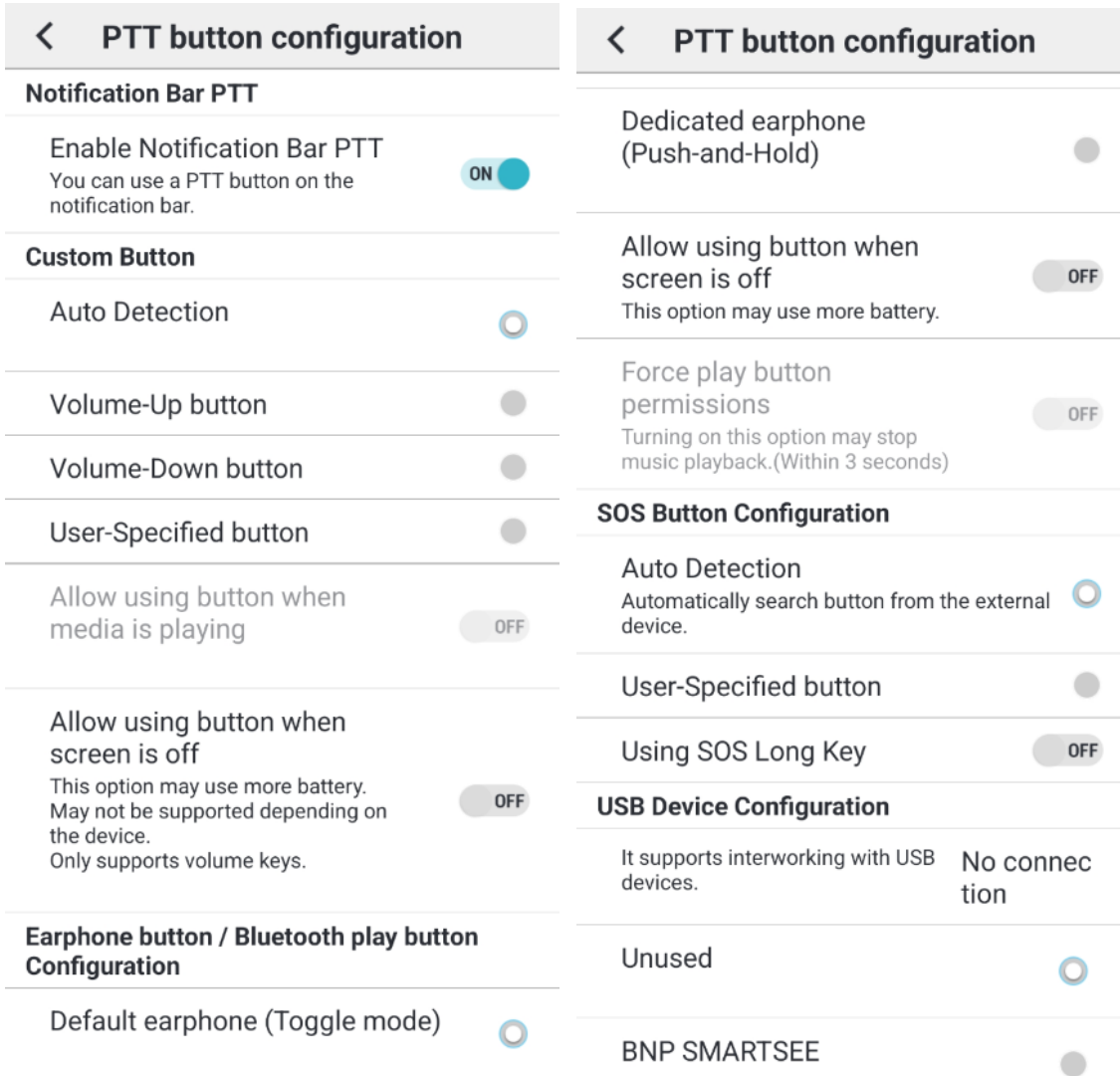


1. Bluetooth Connect: Connect the app and a Bluetooth device.
 - Bluetooth Headset Connect: Connect a headset type Bluetooth device.
 - Bluetooth Button Connect: Connect a PTT button type Bluetooth device.
 - * If you want to connect a Bluetooth device that has both speaker and PTT button, you have to turn ON both Bluetooth Headset Connect and Bluetooth PTT Button Connect.
2. Bluetooth Button: You can select the Bluetooth device option.
 - Auto Connect: Automatically search Bluetooth devices. (Please visit our website to see enable devices.)
 - Some Bluetooth devices that require manual settings are displayed separately
3. Bluetooth Battery Save mode: If you turn ON this option, make the Bluetooth device's speaker/mic turn on only when you send/receive PTT messages to save the battery of the Bluetooth device.

* If the playback quality of the music is not good: ProPTT2 uses the call mode for two-way communication when connected to Bluetooth. Still, the sound quality of your music may drop. If you set the save mode, you can use the call mode only when sending / receiving PTT, so you can maintain the sound quality of music.

8.4. PTT Button configuration

You can set up for Push-To-Talk button.



1. Notification PTT: In notification bar, you can use PTT.
2. Custom Button: You can specify custom button of external devices.
 - Auto Detection: When connecting the bundled earphones, recognize the button on the bundled earphones as a lock button.
 - Volume-Up/Down button: Use the volume button as a lock button.
 - User-specified button: Select this option and press a button on the external device.
 - Allow using button when media is playing: You can use the button to send a PTT when media is playing.
 - Allow using button when screen is off: You can use a volume key as a lock button when screen is off. (This option may use more battery. * May not be supported depending on the device.)

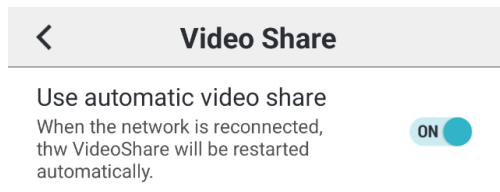
3. Earphone Button: You can set earphone button options.
 - Default earphone (toggle mode): bundled, general earphone type. This type supports toggle button mode.
 - Dedicated earphone (Push-and-Hold): Push-To-Talk dedicated earphone type. This type supports Push-and-Hold mode.
 - Allow using button when screen is off: turn this option ON to use the earphone button when the screen is off.
 - Force Play button permissions: you can use Play button to transmit PTT message when screen is off and music is playing, (If you turn option ON, music playback may stop)

4. SOS Button Configuration: You can specify the button of external devices for sending SOS message.
 - This support two options(Auto Detection, User-Specified button). and If SOS long key, the device must support it.

5. USB Device Configuration
 - It supports interlocking with USB devices and supports buttons of the device.

8.5. Video share configuration

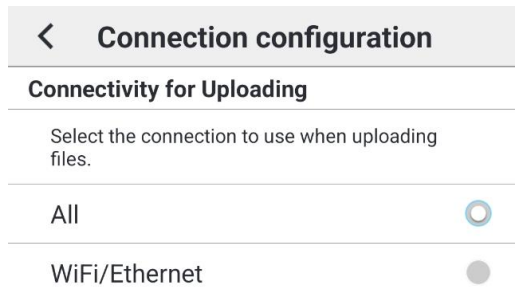
You can set up for video share.



1. Use automatic video share: When the network in reconnected, the video share will be restarted automatically.

8.6. Connection configuration

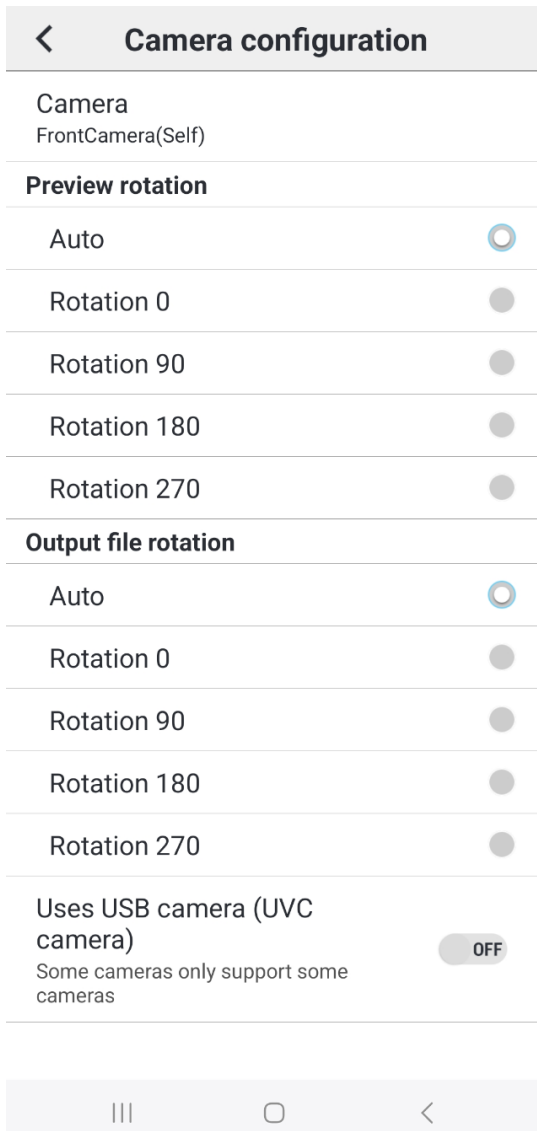
Connectivity for uploading configuration.



1. Connectivity for uploading: Specifies the network to use to upload files.

8.7. Camera configuration

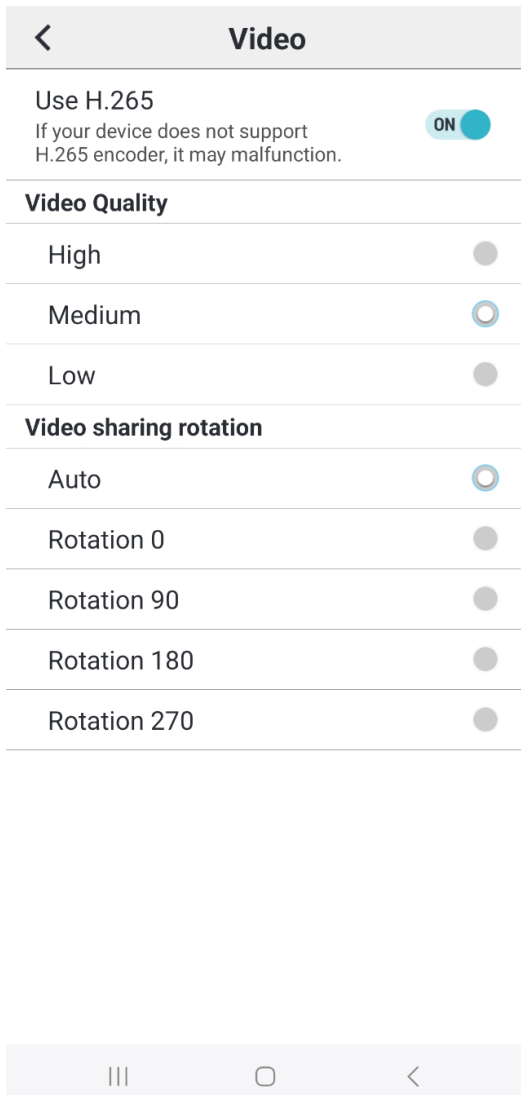
Supports camera settings.



1. Camera specific setting
Specifies the front or rear camera.
2. Preview rotation setting
Specifies rotation of preview(video view).
3. Output file rotation setting
Specifies rotation of output file(mp4).
4. Uses USB camera (UVC camera)
turn this option ON to connect external USB camera for video transmission. Supported some cameras from some devices.

8.8. Video configuration

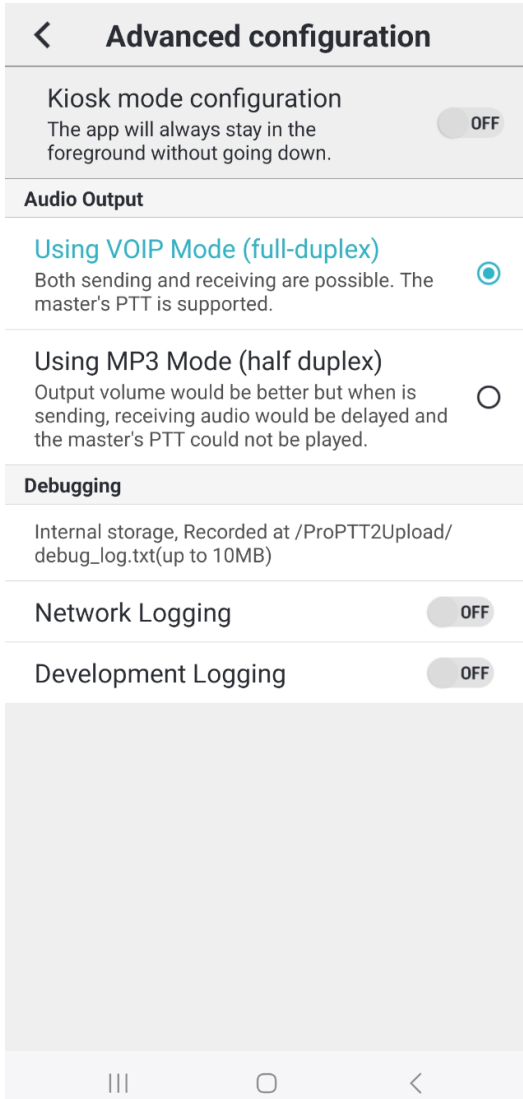
You can set the video used when recording.



1. Use H.265
It can be used if the terminal provides an H.265 encoder. Depending on the terminal, malfunction may occur.
2. Video Quality
You can set the video quality to high, medium, or low.
3. Video sharing rotation
You can set the video share's rotation.

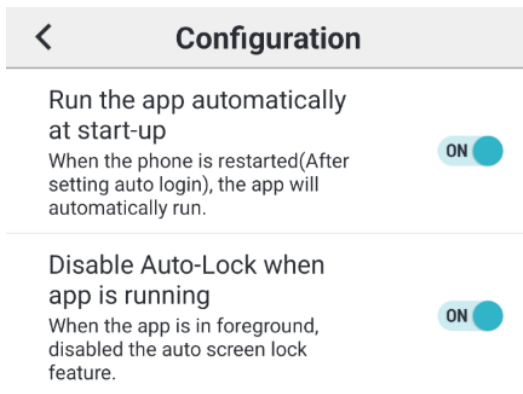
8.9. Advanced configuration

You can set special functions.



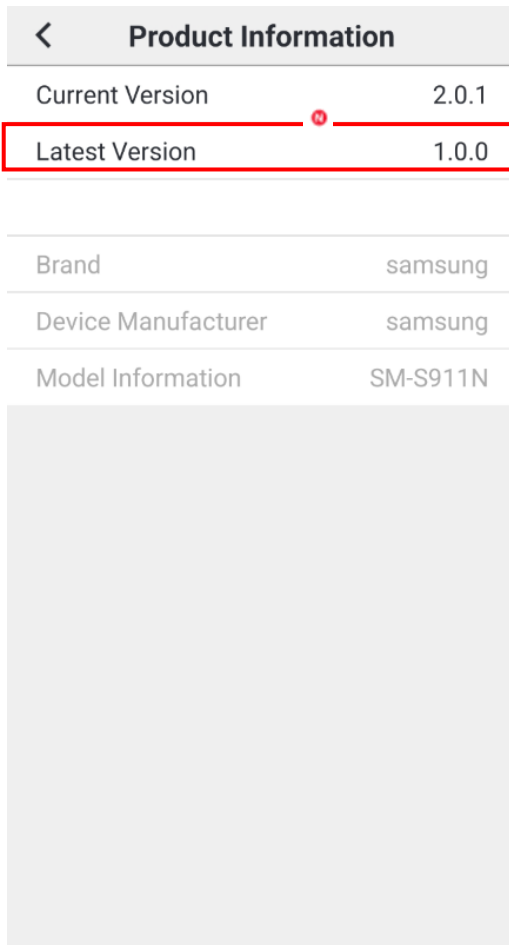
1. Kiosk mode setting: If you turn this option ON, the app will always stay in foreground.
2. Audio output: You could set audio output path.
3. Debugging
 - Network logging: Records network-related logs for debugging assistance.
 - Development logging: Records app-related logs, excluding network, for debugging assistance.

8.10. Configuration



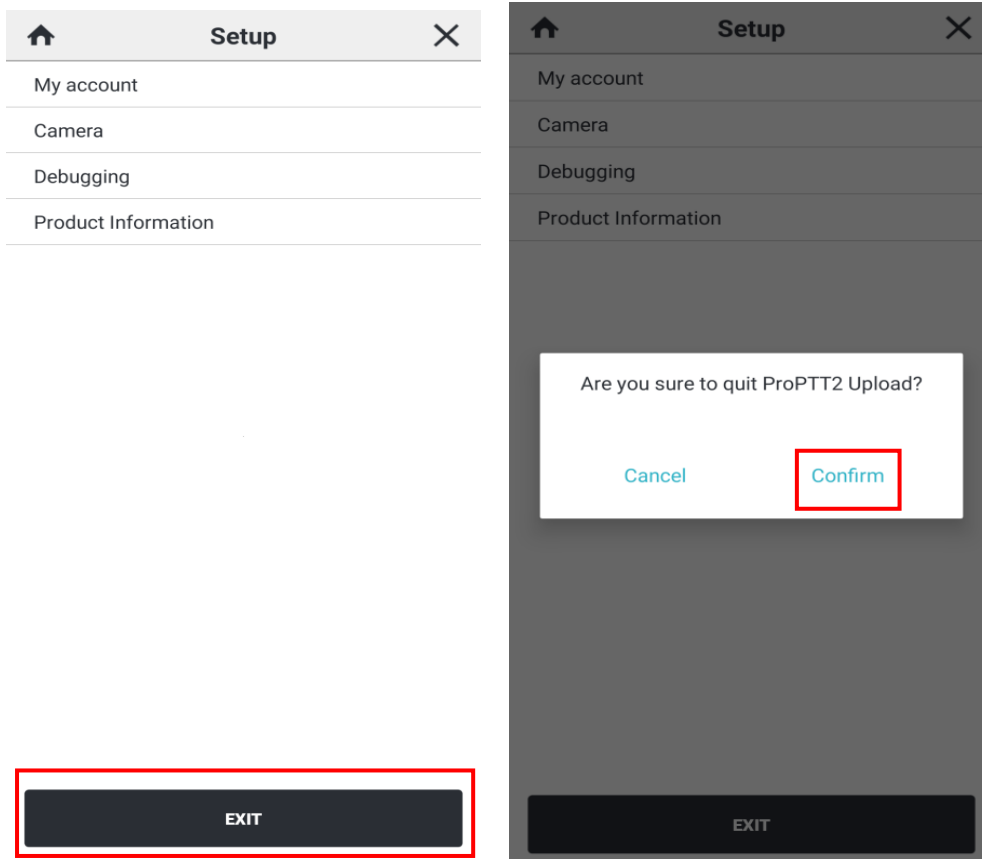
1. Run the app automatically at start-up
If you turn this option ON, the app will automatically run when the device is restarted.
2. Run the app automatically at start-up
Turn this option ON to disable the auto screen lock when the app is in foreground.

8.11. Information



1. Product Information: You can see application version information, and website information
 - A. If the latest version has a badge icon, you can click on it to upgrade to the latest version.

9. Close Application



1. Go to **Setup**
2. Tap **Exit** at the bottom of the screen.
3. Tap [**Confirm**] to quit the application.

10. **FAQ**

Please refer to FAQ page on ProPTT2 website.

FAQ: http://www.proptt2.com/en/support_faq.html